



Container Specifications

These specifications are intended for use as a guide only and the following points should be considered.

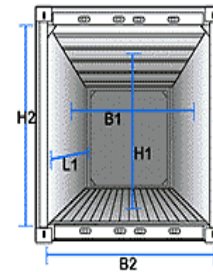
- By ISO definition outer dimensions of containers are the following:
 - Lengths: 20', 40', 45'
 - Width: 8'0"
 - Height: 8'6" or 9'6"
- Inner dimensions may vary according to construction. For example wall type and wall thickness.
- Maximum weights should not be exceeded.
- Road transport of containers must comply with the road laws of relevant countries.

General Purpose Containers

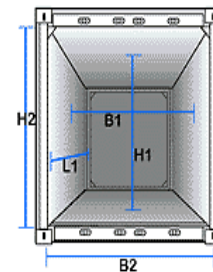
Closed container suitable for all types of general cargo.

General Purpose	20' GP Container	40' GP Container	40' Hi-Cube Container
Specifications	8x8'6" Standard	8x8'6" Standard	8x9'6" Hi-Cube
Inside Cubic	32.8 m ³	67.2 m ³	75.9 m ³
Capacity	(1,158 cu.ft)	(2,372 cu.ft)	(2,679 cu.ft)
Cargo Capacity	21,640 kg	26,500 kg	26,400 kg
	(47,716 lbs.)	(58,433 lbs.)	(58,058 lbs.)
Tare Weight	2,360 kgs (5,200lbs)	3,980 kgs (8,776 lbs)	4150 kgs (9,150 lbs)
Internal Measurements			
Length	5.90 m (19.35 ft)	12.01 m (39.39 ft)	12.01 m (39.39 ft)
Width	2.35 m (7.71 ft)	2.35 m (7.71 ft)	2.35 m (7.71 ft)
Height	2.38 m (7.80 ft)	2.38 m (7.80 ft)	2.69 m (8.82 ft)
Door Size			
Height	2.28 m (7.48 ft)	2.28 m (7.48 ft)	2.58 m (8.46 ft)
Width	2.33 m (7.64 ft)	2.33 m (7.64 ft)	2.35 m (7.71 ft)

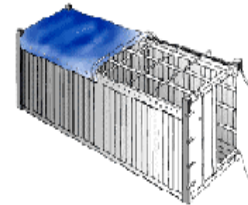
General Containers



Refrigerated & Reefer Containers



Open Top Containers

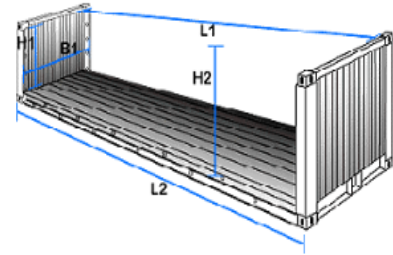


Flat Rack Containers



Refrigerated & Reefer Containers

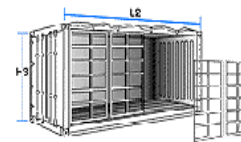
Refrigerated Container	20' Reefer Container	40' Reefer Container	40' Hi-Cube Reefer
Specifications	8x8'6" Standard	8x8'6" Standard	8x9'6" Hi- Cube
Inside Cubic	28.3 m3	57.8 m3	65.8 m
Capacity	(1,000 cu.ft)	(2,040 cu.ft)	(2,324 cu.ft)
Cargo Capacity	22,111 kg (48,746 lbs.)	26,120 kg (57,590 lbs.)	28,180 kg (62,126 lbs.)
Tare Weight	3290 kgs (7,251 lbs)	4360 kgs (9,610 lbs)	4,600 kgs (10,141 lbs)
Internal Measurements			
Length	5.425 m (17'8")	11.493 m (37'8")	11.557 m (37'11")
Width	2.275 m (7'5")	2.270 m (7'5")	2.286 m (7'6")
Height	2.260 m (7'5")	2.197 m (7'2")	2.491 m (8'2")
Door Size			
Height	2.216 m (7'3")	2.155 m (7'0")	2.454 m (8'1/2")
Width	2.258 (7'5")	2.282 m (7'5")	2.286 m (7'6")



Platform Containers



Open Sided Container



Open Top Containers

Containers have a top loading facility designed for the carriage of heavy and awkward cargo.

Open top Container	20' Open Top Container	40' Open Top Container
Specifications	8x8'6" Standard	8x8'6" Standard
Inside Cubic Capacity	32.6 m3 (1,151 cu.ft.)	66.7 m3 (2,355 cu.ft.)
Cargo Capacity	21,700 kg (47,839 lbs.)	26,530 kg (58,490 lbs.)
Tare Weight	2,300 kg (5,071 lbs.)	3,950 kg (8,170 lbs.)
Internal Measurements		
Length	5.88 m (19.29 ft.)	12.01 m (39.39 ft.)
Width	2.33 m (7.64 ft.)	2.33 m (7.64 ft.)
Height	2.31 m (7.58 ft.)	2.31 m (7.58 ft.)
Door Size		
Height	2.28 m (7.48 ft.)	2.28 m (7.48 ft.)
Width	2.33 m (7.64 ft.)	2.33 m (7.64 ft.)



Flat Rack Containers

Containers are designed to carry cargo in excess of the dimensions available in either General purpose or Open top containers. They consist of a flat bed with fixed ends.

Flat Rack Container	20' Flat Rack	40' Flat Rack
Specifications	8x8'6" Standard	8x8'6" Standard
Cargo Capacity	20,015 kg (44, 133 lbs.)	30,476 kg (67,200 lbs.)
Tare Weight	3,100 kg (6,835 lbs.)	6,646 kg (12,450 lbs.)
Measurement		
Length Overall	5.85 m (19.19 ft.)	12.05 m (39.52 ft.)
Width	2.23 m (7.31 ft.)	2.12 m (6.95 ft.)
Height	2.15 m (7.04 ft.)	1.96 m (6.43 ft.)

Platform Containers

Platform Containers are designed to carry cargo in excess of the dimensions available in either General purpose, Open top or Flat Rack containers. They consist of a flat bed with lashing points for securing cargo.

Platform Containers	20' Platform	40' Platform
Specifications		
Cargo Capacity	24,000 kg (52,896 lbs.)	39,200 kg (86,397 lbs.)
Tare Weight	2,750 kg (6,061 lbs.)	5,800 kg (12,783 lbs.)
Length Overall	6.085m (19'11")	12.90m (40'00")
Width	2.438m (8'00")	2.40m (8'00")
Height	2.233m (7'04")	1.95m (6'5")